

ENCODE DCC Antibody Validation Document

Date of Submission

Name:

Email:

Lab

Antibody Name:

Target:

Company/
Source:

Catalog Number, database ID, laboratory

Lot Number

Antibody
Description:

Target
Description:

Species Target

Species Host

Validation Method #1

Validation Method #2

Purification
Method

Polyclonal/
Monoclonal

Vendor URL:

Reference (PI/
Publication
Information)

Please complete the following for antibodies to histone modifications:
*if your specifications are not listed in the drop-down box,
please write-in the appropriate information*

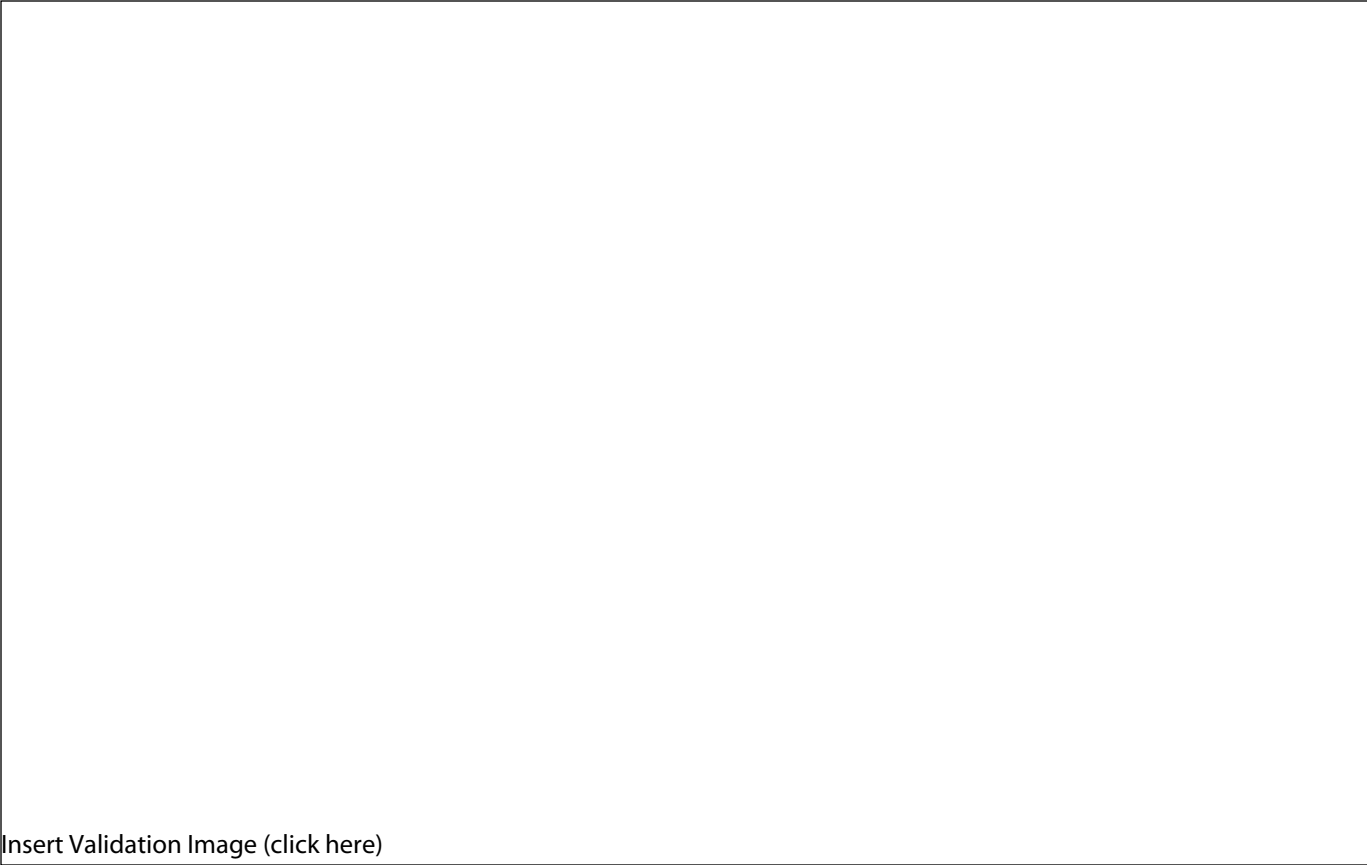
Histone Name

AA modified

AA Position

Modification

Validation #1
Analysis

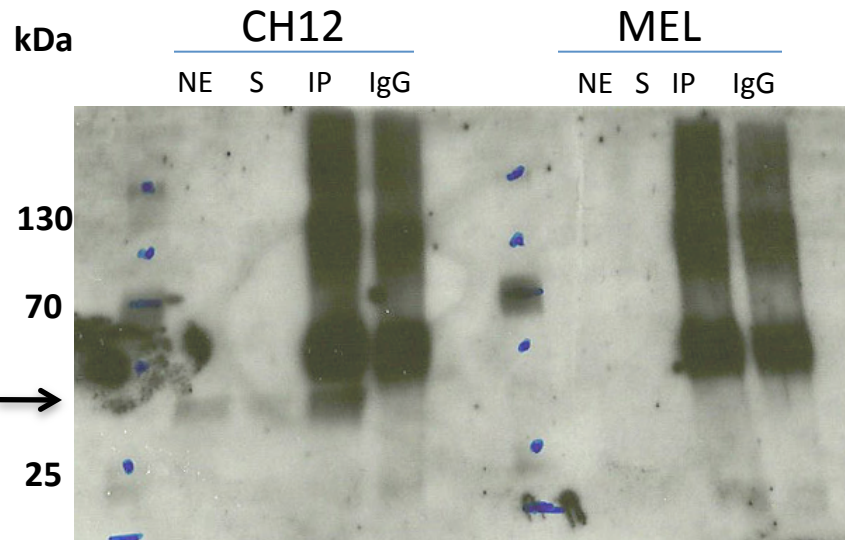


Insert Validation Image (click here)

Antibody: c-Jun Source: Santa Cruz Biotech sc-1694

Epitope: Rabbit polyclonal to amino acids 1-79 mapping at the N-terminus of c-Jun p39 of human origin

Validation 1: Immunoprecipitation (IP) in both CH12 and MEL cell lines



Arrow indicates immunoprecipitated band of expected size of c-Jun in both CH12 and MEL cell lines (39 kDa).

NE: nuclear extract

S: supernatant after IP

IP: IP with tested antibody

IgG: IP with control IgG

Note: No detectable c-Jun in MEL cell, consistent with RNA-seq results

Validation #2
Analysis



Insert Validation Image (Click here)