

ENCODE DCC Antibody Validation Document

Date of Submission

Name:

Email:

Lab

Antibody Name:

Target:

Company/
Source:

Catalog Number, database ID, laboratory

Lot Number

Antibody
Description:

Target
Description:

Species Target

Species Host

Validation Method #1

Validation Method #2

Purification
Method

Polyclonal/
Monoclonal

Vendor URL:

Reference (PI/
Publication
Information)

Please complete the following for antibodies to histone modifications:
*if your specifications are not listed in the drop-down box,
please write-in the appropriate information*

Histone Name

AA modified

AA Position

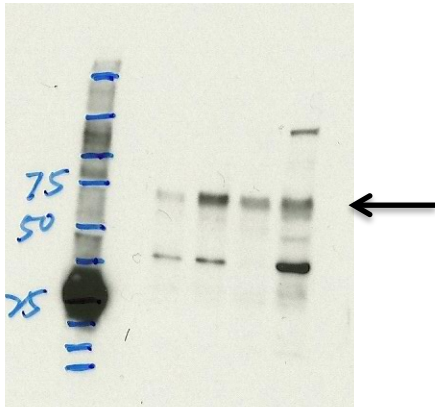
Modification

Validation #1
Analysis

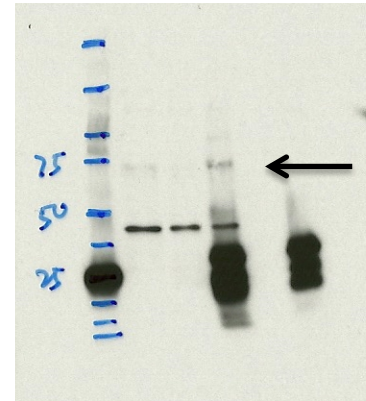


Insert Validation Image (click here)





Western Blot analysis of nuclear extracts from GM12878, K562, HeLaS3 and HepG2 using anti ZNF143 antibody from ProteinTech (16618-1-AP). Expected protein band 68kD



Western Blot analysis of immunoprecipitated proteins from HepG2 nuclear extracts detected using anti ZNF143 antibody from ProteinTech (16618-1-AP). Expected protein band 68kD.

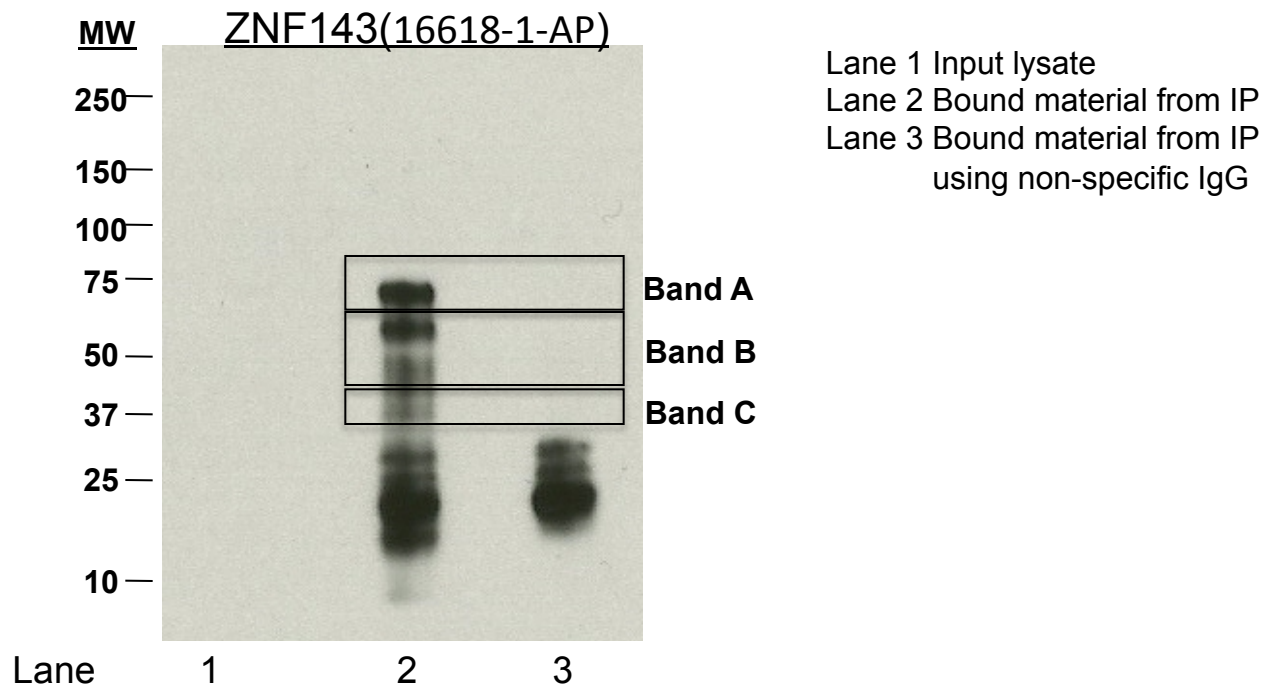
Validation #2
Analysis



Insert Validation Image (Click here)

16618-1-AP (ZNF143)

Immunoprecipitation/Mass spectrometry



Spectra	Name of Protein	Count of Peptides	Ratio (ZNF143/IgG Control)
ZNF143_A Band	Isoform 1 of Nucleolar RNA helicase 2	31	1.24
ZNF143_A Band	Isoform 2 of Heterogeneous nuclear ribonucleoprotein M	27	1
ZNF143_A Band	Nuclear pore complex protein Nup93	21	2.625
ZNF143_A Band	Isoform 1 of Interleukin enhancer-binding factor 3	20	1.052631579
ZNF143_A Band	Transducin beta-like protein 3	18	0.9
ZNF143_A Band	RNA-binding protein 28	16	1
ZNF143_A Band	Polymeric immunoglobulin receptor	15	NOT IN CONTROL IP
ZNF143_A Band	DNA topoisomerase 1	15	0.789473684
ZNF143_A Band	Isoform 1 of Transcription intermediary factor 1-beta	14	NOT IN CONTROL IP
ZNF143_A Band	X-ray repair cross-complementing protein 5	13	1.181818182
ZNF143_A Band	WD repeat-containing protein 36	13	0.928571429
ZNF143_A Band	cDNA FLJ58679, highly similar to Lactotransferrin	12	NOT IN CONTROL IP
ZNF143_A Band	Nucleolar complex protein 2 homolog	12	2.4
ZNF143_A Band	WD repeat-containing protein 3	12	1
ZNF143_A Band	Heat shock protein HSP 90-beta	12	0.857142857
ZNF143_A Band	Putative pre-mRNA-splicing factor ATP-dependent RNA helicase DHX15	12	0.705882353
ZNF143_A Band	Cell division cycle 5-like protein	11	0.647058824
ZNF143_A Band	Isoform 2 of Zinc finger protein 143	10	NOT IN CONTROL IP
ZNF143_A Band	Isoform 1 of Heat shock protein HSP 90-alpha	10	0.909090909
ZNF143_A Band	Probable ATP-dependent RNA helicase DDX27	10	0.625
ZNF143_A Band	Isoform 2 of Sphingomyelin phosphodiesterase 4	9	NOT IN CONTROL IP
ZNF143_A Band	FACT complex subunit SSRP1	9	1.8
ZNF143_A Band	Isoform 2 of Hypermethylated in cancer 2 protein	9	1.8
ZNF143_A Band	Isoform UBF2 of Nucleolar transcription factor 1	9	0.9
ZNF143_A Band	NOP2 protein	9	0.5625
ZNF143_A Band	Isoform 1 of DNA replication licensing factor MCM7	8	2.666666667
ZNF143_A Band	apoptotic chromatin condensation inducer in the nucleus isoform 3	7	1.4
ZNF143_A Band	Deoxynucleotidyltransferase terminal-interacting protein 2	7	1
ZNF143_A Band	Isoform 2 of Spermatid perinuclear RNA-binding protein	7	0.777777778
ZNF143_A Band	ATP-dependent RNA helicase DDX18	7	0.583333333
ZNF143_A Band	Seipin	7	0.388888889
ZNF143_A Band	Protein AATF	6	3
ZNF143_A Band	cDNA FLJ46571 fis, clone THYMU3041428, highly similar to Probable ATP-dependent RNA helicase DDX	6	1.5
ZNF143_A Band	Ribosome biogenesis protein BOP1	6	1
ZNF143_A Band	Nucleolin	6	0.545454545
ZNF143_A Band	Splicing factor 3A subunit 1	6	0.461538462
ZNF143_A Band	Periodic tryptophan protein 2 homolog	6	0.428571429

ZNF143_A Band	Isoform 1 of Pinin	6	0.4
ZNF143_A Band	Transferrin receptor protein 1	5	1.666666667
ZNF143_A Band	Isoform Alpha of Nucleolar and coiled-body phosphoprotein 1	5	0.625
ZNF143_A Band	ATP-dependent RNA helicase DDX50	5	0.555555556
ZNF143_A Band	Isoform 2 of Protein LAS1 homolog	5	0.555555556
ZNF143_A Band	Isoform 1 of U3 small nucleolar RNA-associated protein 14 homolog A	5	0.3125
ZNF143_A Band	Isoform 5 of N-terminal kinase-like protein	4	NOT IN CONTROL IP
ZNF143_A Band	Elongation factor 2	4	2
ZNF143_A Band	Importin subunit beta-1	4	1.333333333
ZNF143_A Band	Isoform 1 of Nucleolar protein 10	4	0.8
ZNF143_A Band	WD repeat-containing protein 43	4	0.571428571
ZNF143_A Band	NF-kappa-B-repressing factor	4	0.444444444
ZNF143_A Band	Pre-mRNA-processing factor 6	4	0.444444444
ZNF143_A Band	FACT complex subunit SPT16	4	0.285714286
ZNF143_A Band	116 kDa U5 small nuclear ribonucleoprotein component isoform b	4	0.2
ZNF143_A Band	Isoform 2 of Sarcoplasmic/endoplasmic reticulum calcium ATPase 2	3	NOT IN CONTROL IP
ZNF143_A Band	Nuclear cap-binding protein subunit 1	3	1
ZNF143_A Band	Isoform 4 of Heterogeneous nuclear ribonucleoprotein U-like protein 1	3	0.75
ZNF143_A Band	Unc-84 homolog A	3	0.75
ZNF143_A Band	Probable ATP-dependent RNA helicase DDX10	3	0.6
ZNF143_A Band	testis-expressed sequence 10 protein isoform 2	3	0.5
ZNF143_A Band	Isoform 1 of Ribosomal RNA processing protein 1 homolog B	3	0.428571429
ZNF143_A Band	U3 small nucleolar ribonucleoprotein protein MPP10	3	0.428571429
ZNF143_A Band	Pre-mRNA-splicing factor SYF1	3	0.375
ZNF143_A Band	SWI/SNF-related matrix-associated actin-dependent regulator of chromatin subfamily A member 5	3	0.230769231
ZNF143_A Band	N-acetyltransferase 10	3	0.130434783
ZNF143_A Band	Complement C5	2	NOT IN CONTROL IP
ZNF143_A Band	SUN domain-containing protein 2	2	NOT IN CONTROL IP
ZNF143_A Band	Double-strand-break repair protein rad21 homolog	2	1
ZNF143_A Band	Nucleolar protein 9	2	1
ZNF143_A Band	THO complex subunit 5 homolog	2	0.666666667
ZNF143_A Band	A-kinase anchor protein 8-like	2	0.5
ZNF143_A Band	Isoform 1 of U5 small nuclear ribonucleoprotein 200 kDa helicase	2	0.5
ZNF143_A Band	C4A protein	2	0.4
ZNF143_A Band	Isoform Long of Splicing factor, proline- and glutamine-rich	2	0.4
ZNF143_A Band	Nucleolar protein 56	2	0.333333333
ZNF143_A Band	Isoform 1 of THO complex subunit 1	2	0.285714286
ZNF143_A Band	Isoform 5 of Double-stranded RNA-specific adenosine deaminase	2	0.153846154

ZNF143_A Band	ATP synthase subunit alpha, mitochondrial	1	NOT IN CONTROL IP
ZNF143_A Band	Complement C3 (Fragment)	1	NOT IN CONTROL IP
ZNF143_A Band	Isoform 2 of UDP-N-acetylglucosamine--peptide N-acetylglucosaminyltransferase 110 kDa subunit	1	NOT IN CONTROL IP
ZNF143_A Band	Nucleolar complex protein 4 homolog	1	NOT IN CONTROL IP
ZNF143_A Band	Isoform 1 of Bromodomain adjacent to zinc finger domain protein 2A	1	NOT IN CONTROL IP
ZNF143_A Band	Isoform 2 of Nuclear mitotic apparatus protein 1	1	1
ZNF143_A Band	Probable ATP-dependent RNA helicase DDX5	1	1
ZNF143_A Band	CCAAT/enhancer-binding protein zeta	1	0.5
ZNF143_A Band	SWI/SNF related, matrix associated, actin dependent regulator of chromatin, subfamily a, member 1	1	0.5
ZNF143_A Band	Isoform 3 of Probable ATP-dependent RNA helicase DDX17	1	0.333333333
ZNF143_A Band	Thyroid hormone receptor-associated protein 3	1	0.333333333
ZNF143_A Band	Nucleolar GTP-binding protein 1	1	0.125
ZNF143_A Band	Isoform Long of Antigen KI-67	1	0.111111111
ZNF143_A Band	Protein RRP5 homolog	1	0.076923077
ZNF143_B Band	Isoform A of Lamin-A/C	35	1.029411765
ZNF143_B Band	Stress-70 protein, mitochondrial	26	0.8125
ZNF143_B Band	Isoform 1 of Heat shock cognate 71 kDa protein	25	0.925925926
ZNF143_B Band	Lamin-B1	25	0.806451613
ZNF143_B Band	Nucleolar protein 56	23	1
ZNF143_B Band	Isoform 2 of Heterogeneous nuclear ribonucleoprotein M	20	1.666666667
ZNF143_B Band	cDNA FLJ54408, highly similar to Heat shock 70 kDa protein 1	20	1.176470588
ZNF143_B Band	Heat shock 70 kDa protein 1A/1B	20	1.176470588
ZNF143_B Band	Insulin-like growth factor 2 mRNA-binding protein 1	17	0.708333333
ZNF143_B Band	Isoform 2 of Zinc finger protein 143	16	NOT IN CONTROL IP
ZNF143_B Band	Nucleolar protein 58	14	2.333333333
ZNF143_B Band	HSPA5 protein	13	1.083333333
ZNF143_B Band	Probable ATP-dependent RNA helicase DDX5	13	0.764705882
ZNF143_B Band	Regulatory factor X, 5	12	NOT IN CONTROL IP
ZNF143_B Band	X-ray repair cross-complementing protein 6	12	0.428571429
ZNF143_B Band	Isoform 3 of Probable ATP-dependent RNA helicase DDX17	11	0.785714286
ZNF143_B Band	Isoform 1 of RNA-binding protein 14	11	0.733333333
ZNF143_B Band	Isoform 1 of Insulin-like growth factor 2 mRNA-binding protein 3	11	0.6875
ZNF143_B Band	Lamin-B2	11	0.55
ZNF143_B Band	Nucleolar protein 11	10	2
ZNF143_B Band	Calcium-binding mitochondrial carrier protein Aralar2	9	1.5
ZNF143_B Band	Nucleolar GTP-binding protein 1	9	1.5
ZNF143_B Band	Putative uncharacterized protein PES1	9	1
ZNF143_B Band	Heat shock 70 kDa protein 6	9	0.9

ZNF143_B Band	Zinc finger and BTB domain-containing protein 7A	8	NOT IN CONTROL IP
ZNF143_B Band	ATP-dependent RNA helicase DDX18	8	8
ZNF143_B Band	Isoform 1 of Cirhin	8	0.888888889
ZNF143_B Band	U3 small nucleolar RNA-associated protein 18 homolog	8	0.888888889
ZNF143_B Band	Isoform 1 of Nucleolar RNA helicase 2	8	0.8
ZNF143_B Band	Isoform 2 of Guanine nucleotide-binding protein-like 3	7	0.7
ZNF143_B Band	ATP-dependent RNA helicase DDX3X	7	0.538461538
ZNF143_B Band	WD repeat-containing protein 46	7	0.538461538
ZNF143_B Band	U3 small nucleolar RNA-associated protein 6 homolog	7	0.411764706
ZNF143_B Band	T-complex protein 1 subunit alpha	6	NOT IN CONTROL IP
ZNF143_B Band	Isoform 1 of Zinc finger protein 326	6	1.5
ZNF143_B Band	Isoform 5 of Insulin-like growth factor 2 mRNA-binding protein 2	6	0.75
ZNF143_B Band	60 kDa heat shock protein, mitochondrial	5	NOT IN CONTROL IP
ZNF143_B Band	Conserved hypothetical protein	5	NOT IN CONTROL IP
ZNF143_B Band	Dolichyl-diphosphooligosaccharide--protein glycosyltransferase subunit 1 precursor	5	1.25
ZNF143_B Band	Pumilio domain-containing protein KIAA0020	5	0.416666667
ZNF143_B Band	cDNA FLJ41552 fis, clone COLON2004478, highly similar to Protein Tro alpha1 H,myeloma	4	NOT IN CONTROL IP
ZNF143_B Band	cDNA FLJ41981 fis, clone SMINT2011888, highly similar to Protein Tro alpha1 H,myeloma	4	NOT IN CONTROL IP
ZNF143_B Band	Dihydrolipoyllysine-residue acetyltransferase component of pyruvate dehydrogenase complex, mitochondrial	4	1
ZNF143_B Band	Isoform 2 of Fermitin family homolog 3	4	1
ZNF143_B Band	Isoform A of Methyl-CpG-binding protein 2	4	0.8
ZNF143_B Band	probable ATP-dependent RNA helicase DDX52 isoform b	4	0.666666667
ZNF143_B Band	Isoform 2 of Hypermethylated in cancer 2 protein	3	NOT IN CONTROL IP
ZNF143_B Band	Isoform 2 of Putative oxidoreductase GLYR1	3	NOT IN CONTROL IP
ZNF143_B Band	Isoform 2 of Sentrin-specific protease 1	3	NOT IN CONTROL IP
ZNF143_B Band	Isoform 1 of Pinin	3	1.5
ZNF143_B Band	Nucleolin	3	1
ZNF143_B Band	Putative pre-mRNA-splicing factor ATP-dependent RNA helicase DHX15	3	1
ZNF143_B Band	WD repeat-containing protein 43	3	1
ZNF143_B Band	cDNA FLJ53912, highly similar to Zinc finger protein 512	3	0.6
ZNF143_B Band	DNA topoisomerase 1	3	0.6
ZNF143_B Band	SNW domain-containing protein 1	3	0.375
ZNF143_B Band	Isoform 2 of ATPase family AAA domain-containing protein 3A	3	0.2
ZNF143_B Band	Complement C3 (Fragment)	2	NOT IN CONTROL IP
ZNF143_B Band	Complement C5	2	NOT IN CONTROL IP
ZNF143_B Band	Heat shock protein HSP 90-beta	2	NOT IN CONTROL IP
ZNF143_B Band	Putative uncharacterized protein RPN2	2	NOT IN CONTROL IP
ZNF143_B Band	poly(A)-specific ribonuclease PARN isoform 2	2	2

ZNF143_B Band	Histone H1.5	2	1
ZNF143_B Band	X-ray repair cross-complementing protein 5	2	1
ZNF143_B Band	C4A protein	2	0.66666667
ZNF143_B Band	Heat shock protein 75 kDa, mitochondrial	2	0.66666667
ZNF143_B Band	Coilin	2	0.5
ZNF143_B Band	Putative uncharacterized protein FUS	2	0.5
ZNF143_B Band	RNA binding motif protein 39	2	0.4
ZNF143_B Band	Isoform Short of TATA-binding protein-associated factor 2N	2	0.33333333
ZNF143_B Band	Replication protein A 70 kDa DNA-binding subunit	2	0.285714286
ZNF143_B Band	ATP-dependent RNA helicase DDX50	1	NOT IN CONTROL IP
ZNF143_B Band	Isoform 1 of Heat shock protein HSP 90-alpha	1	NOT IN CONTROL IP
ZNF143_B Band	Isoform 1 of Transcription intermediary factor 1-beta	1	NOT IN CONTROL IP
ZNF143_B Band	Nucleolar complex protein 4 homolog	1	NOT IN CONTROL IP
ZNF143_B Band	Pre-mRNA-processing-splicing factor 8	1	NOT IN CONTROL IP
ZNF143_B Band	SUN domain-containing protein 2	1	NOT IN CONTROL IP
ZNF143_B Band	Nucleolar protein 9	1	1
ZNF143_B Band	Ribosome biogenesis protein BOP1	1	0.5
ZNF143_B Band	RNA-binding protein 28	1	0.5
ZNF143_B Band	Isoform 1 of Interleukin enhancer-binding factor 3	1	0.33333333
ZNF143_C Band	Isoform 2 of Zinc finger protein 143	14	NOT IN CONTROL IP
ZNF143_C Band	Eukaryotic initiation factor 4A-III	13	0.86666667
ZNF143_C Band	Interleukin enhancer-binding factor 2	9	0.5
ZNF143_C Band	ATP synthase subunit alpha, mitochondrial	8	1.142857143
ZNF143_C Band	Heterogeneous nuclear ribonucleoprotein H	8	0.571428571
ZNF143_C Band	ATP-dependent RNA helicase DDX39	5	1
ZNF143_C Band	Isoform 1 of Spliceosome RNA helicase BAT1	5	1
ZNF143_C Band	Putative uncharacterized protein HNRNPD	5	0.83333333
ZNF143_C Band	Tubulin, beta	5	0.714285714
ZNF143_C Band	cDNA FLJ32385 fis, clone SKMUS1000110, highly similar to Tubulin alpha-8 chain	5	0.625
ZNF143_C Band	Isoform 1 of Polypyrimidine tract-binding protein 1	5	0.454545455
ZNF143_C Band	cDNA FLJ53063, highly similar to Tubulin beta-7 chain	4	0.8
ZNF143_C Band	Ribosome biogenesis protein WDR12	4	0.8
ZNF143_C Band	Tubulin beta-2C chain	4	0.8
ZNF143_C Band	Heterogeneous nuclear ribonucleoprotein F	4	0.5
ZNF143_C Band	h/ACA ribonucleoprotein complex subunit 4 isoform 2	4	0.444444444
ZNF143_C Band	Heterogeneous nuclear ribonucleoprotein K	4	0.444444444
ZNF143_C Band	Nucleolar protein 58	4	0.235294118
ZNF143_C Band	Zinc finger and BTB domain-containing protein 7A	3	NOT IN CONTROL IP

ZNF143_C Band	cDNA FLJ53012, highly similar to Tubulin beta-7 chain	3	1.5
ZNF143_C Band	Tubulin beta-3 chain	3	1
ZNF143_C Band	U3 small nucleolar RNA-associated protein 15 homolog	3	0.75
ZNF143_C Band	Vimentin	3	0.75
ZNF143_C Band	Lamin-B receptor	3	0.6
ZNF143_C Band	Ribosome biogenesis regulatory protein homolog	3	0.428571429
ZNF143_C Band	Eukaryotic initiation factor 4A-I	3	0.3
ZNF143_C Band	Eukaryotic translation initiation factor 2 subunit 3	2	NOT IN CONTROL IP
ZNF143_C Band	Putative uncharacterized protein DKFZp686I04196 (Fragment)	2	1
ZNF143_C Band	Bystin	2	0.666666667
ZNF143_C Band	DDB1- and CUL4-associated factor 13	2	0.666666667
ZNF143_C Band	RNA-binding motif protein, X-linked-like-2	2	0.666666667
ZNF143_C Band	Tubulin beta-2A chain	2	0.666666667
ZNF143_C Band	Isoform 1 of Heterogeneous nuclear ribonucleoprotein D-like	2	0.5
ZNF143_C Band	Isoform 3 of Core histone macro-H2A.1	2	0.333333333
ZNF143_C Band	Pre-mRNA-processing factor 19	2	0.25
ZNF143_C Band	U3 small nucleolar RNA-interacting protein 2	2	0.222222222
ZNF143_C Band	Nucleolar complex protein 4 homolog	2	0.2
ZNF143_C Band	Isoform 1 of Transcription intermediary factor 1-beta	1	NOT IN CONTROL IP
ZNF143_C Band	Probable rRNA-processing protein EBP2	1	NOT IN CONTROL IP
ZNF143_C Band	Putative uncharacterized protein RPN2	1	NOT IN CONTROL IP
ZNF143_C Band	cDNA FLJ41552 fis, clone COLON2004478, highly similar to Protein Tro alpha1 H,myeloma	1	1
ZNF143_C Band	cDNA FLJ41981 fis, clone SMINT2011888, highly similar to Protein Tro alpha1 H,myeloma	1	1
ZNF143_C Band	Conserved hypothetical protein	1	1
ZNF143_C Band	Ribosomal protein L3, isoform CRA_b	1	0.333333333
ZNF143_C Band	Putative pre-mRNA-splicing factor ATP-dependent RNA helicase DHX15	1	0.25