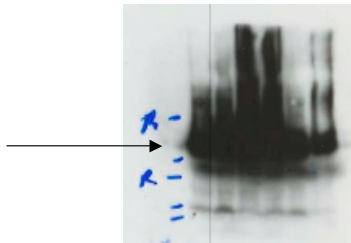


Antibody: TBP Source: Abcam ab62126

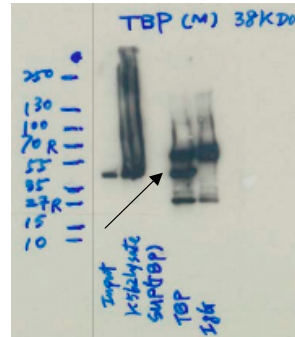
Epitope: Mouse monoclonal. Immunogen is synthetic peptide conjugated to KLH derived from within residues 1 - 100 of Human TATA binding protein TBP

Validation 1: Immunoblotting

Arrow indicates band consistent with expected size (38kD) of TBP in whole cell lysates from (left to right): K562 (lanes 1 and 2), HeLaS3 (lane 3), HepG2 (lane 4), and GM12878 (lanes 5 and 6) cell lines.



Arrow indicates immunoprecipitated band of expected size for TBP from K562 nuclear lysates. Lane 1= K562 nuclear lysate, Lane 2= K562 whole cell lysate, Lane 3= supernatant from K562 immunoprecipitation (IP), Lane 4= bound material from K562 IP, Lane 5= bound material from control IgG IP from K562.



Validation 2: In Progress