

# ENCODE DCC Antibody Validation Document

Date of Submission

Name:

Email:

Lab

Antibody Name:

Target:

Company/  
Source:

Catalog Number, database ID, laboratory

Lot Number

Antibody  
Description:

Target  
Description:

Species Target

Species Host

Validation Method #1

Validation Method #2

Purification  
Method

Polyclonal/  
Monoclonal

Vendor URL:

Reference (PI/  
Publication  
Information)

Please complete the following for antibodies to histone modifications:  
*if your specifications are not listed in the drop-down box,  
please write-in the appropriate information*

Histone Name

AA modified

AA Position

Modification

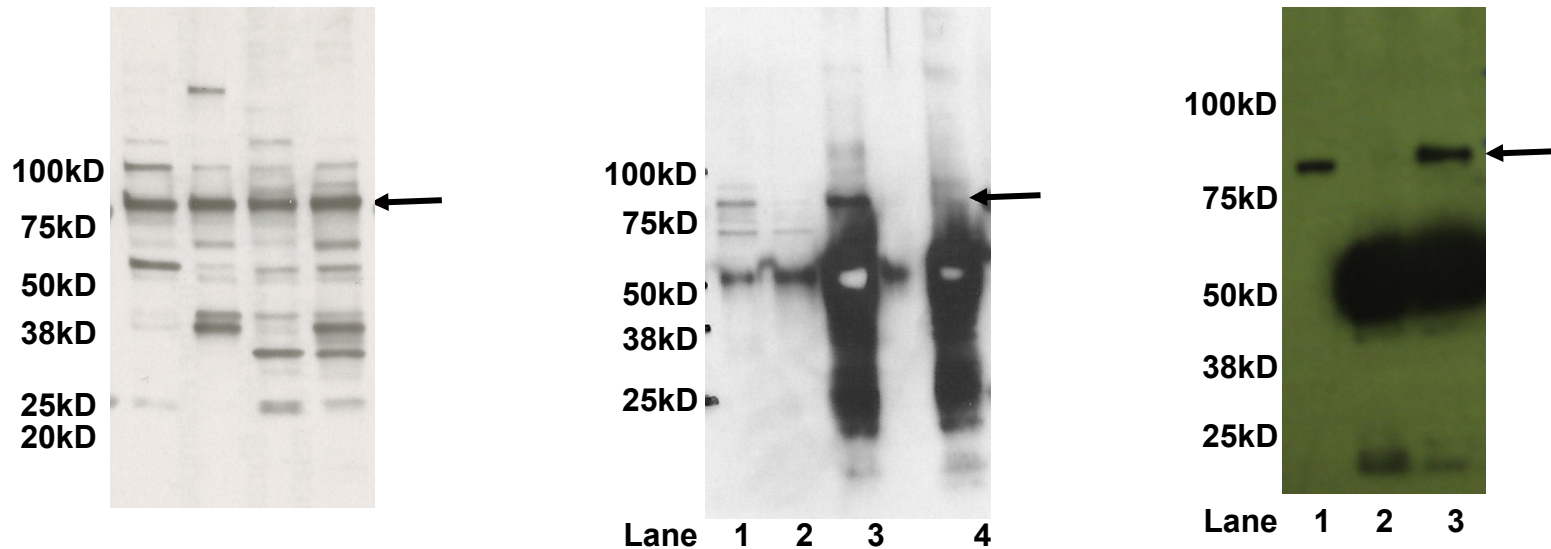
Validation #1  
Analysis



Insert Validation Image (click here)



# sc-482 (STAT3) Immunoblot/ Immunoprecipitation



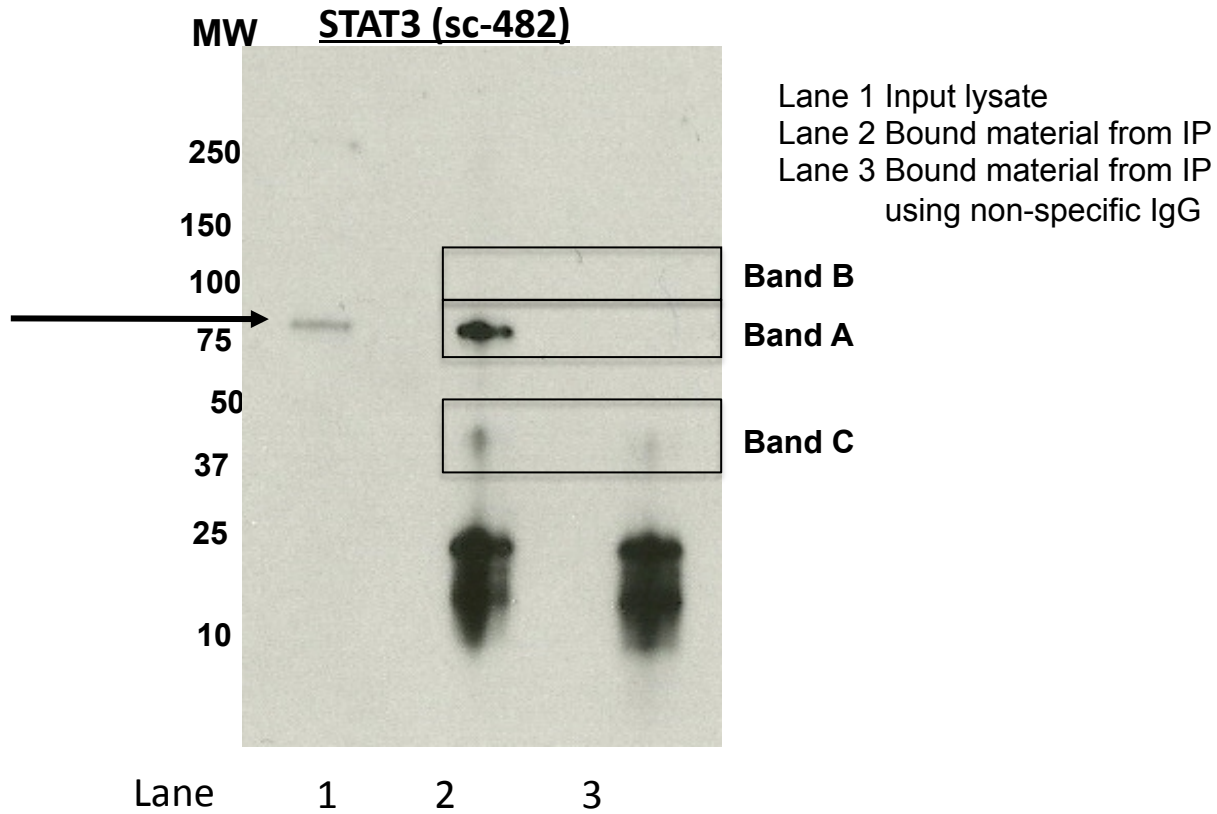
**Left.** Western blot using antibody sc-482. Lanes contain nuclear lysates from (left to right) K562 cells, GM12878 cells, HeLa S3 cells, and HepG2 cells. **Center.** Immunoprecipitation of STAT3 from HeLaS3 cells using sc-482. Lane 1: input nuclear lysate, Lane 2: unbound material from immunoprecipitation with sc-482, Lane 3: material immunoprecipitated with sc-482, Lane 4: material immunoprecipitated using control IgG. **Right.** Immunoprecipitation of STAT3 from K562 cells using sc-482. Lane 1: input nuclear lysate, Lane 2: material immunoprecipitated using control IgG, Lane 3: material immunoprecipitated with sc-482. In all panels, arrow indicates band consistent with expected size (88kD) of STAT3

Validation #2  
Analysis



Insert Validation Image (Click here)

# sc-482 (STAT3) Immunoprecipitation/ Mass spectrometry



Band	Protein	Count of Peptides	Ratio (STAT3/ IgG control)
A	Isoform A of Lamin-A/C	16	1.23
A	signal transducer and activator of transcription 3 isoform 3	14	NOT IN CONTROL IP
A	Heat shock protein HSP 90-beta	9	1.5
A	Isoform 1 of Heat shock protein HSP 90-alpha	9	1.8
A	Transducin beta-like protein 3	9	0.6
A	HSPA5 protein	8	2
A	Stress-70 protein, mitochondrial	8	1.6
A	Isoform 2 of Heterogeneous nuclear ribonucleoprotein M	7	1
A	Putative pre-mRNA-splicing factor ATP-dependent RNA helicase DHX15	7	1
A	ATP-dependent RNA helicase DDX18	6	0.86
A	Isoform 1 of Nucleolar RNA helicase 2	6	0.46
A	Isoform 1 of Sodium channel and clathrin linker 1	6	NOT IN CONTROL IP
A	Nucleolar protein 11	6	1.5
A	64 kDa protein	5	1.67
A	DNA topoisomerase 2	5	0.5
A	Isoform 1 of Erlin-2	5	NOT IN CONTROL IP
A	Nucleolar GTP-binding protein 1	5	1.25
A	cDNA FLJ50575, highly similar to U4/U6 small nuclear ribonucleoprotein Prp3	4	2
A	Isoform 1 of Ribosomal RNA processing protein 1 homolog B	4	0.67
A	Isoform 2 of Protein LAS1 homolog	4	1
A	Isoform 3 of Probable ATP-dependent RNA helicase DDX17	4	2
A	NOP2 protein	4	0.44
A	Nuclear pore complex protein Nup93	4	1.33
A	Trifunctional enzyme subunit alpha, mitochondrial	4	NOT IN CONTROL IP
A	ATP-dependent RNA helicase A	3	0.38
A	ATP-dependent RNA helicase DDX50	3	1
A	DNA replication licensing factor MCM7 isoform 2	3	3
A	Erlin-1	3	NOT IN CONTROL IP
A	FACT complex subunit SSRP1	3	1.5
A	X-ray repair cross-complementing protein 5	3	0.75
A	64 kDa protein	2	2
A	cDNA FLJ14021 fis, clone HEMBA1002513, highly similar to Histone deacetylase 6 (Fragment)	2	NOT IN CONTROL IP
A	cDNA FLJ35172 fis, clone PLACE6013232	2	1

A	DNA FLJ52588, highly similar to Mus musculus MYST histone acetyltransferase 2 (Myst2), mRNA	2	NOT IN CONTROL IP
A	cDNA FLJ57106, highly similar to Transferrin receptor protein 1	2	2
A	Isoform 1 of Heat shock cognate 71 kDa protein	2	2
A	Isoform 1 of THO complex subunit 1	2	1
A	Isoform 1 of Uncharacterized protein C17orf85	2	1
A	Isoform 1 of Zinc finger protein 326	2	2
A	Isoform 5 of Interleukin enhancer-binding factor 3	2	0.25
A	Isoform Beta-1 of DNA topoisomerase 2-beta	2	0.4
A	Junction plakoglobin	2	2
A	Major centromere autoantigen B	2	0.67
A	Nuclear cap-binding protein subunit 1	2	2
A	poly(A)-specific ribonuclease PARN isoform 2	2	0.67
A	Protein AATF	2	2
A	Ribosome biogenesis protein BOP1	2	0.67
A	RSL1D1 protein	2	1
A	Serpin B12	2	2
A	SWI/SNF-related matrix-associated actin-dependent regulator of chromatin subfamily A member 1	2	0.5
A	WD repeat domain 46	2	NOT IN CONTROL IP
A	WD repeat-containing protein 36	2	0.5
A	WD repeat-containing protein 43	2	1
A	WD repeat-containing protein 75	2	2
A	116 kDa U5 small nuclear ribonucleoprotein component isoform b	1	0.17
A	cDNA FLJ54408, highly similar to Heat shock 70 kDa protein 1	1	1
A	cDNA FLJ56548, highly similar to Elongation factor 2	1	NOT IN CONTROL IP
A	cDNA FLJ59138, highly similar to Annexin A2	1	NOT IN CONTROL IP
A	cDNA FLJ59357, highly similar to Probable ATP-dependent RNA helicase DDX5	1	1
A	cDNA FLJ59523, highly similar to Scaffold attachment factor B	1	0.5
A	DNA topoisomerase 1	1	0.17
A	Elongation factor 1-alpha 1	1	1
A	Endoplasmin	1	0.5
A	FACT complex subunit SPT16	1	0.17
A	Heterochromatin protein 1, binding protein 3	1	0.5
A	Histone H1.5	1	NOT IN CONTROL IP
A	Histone H2A.V	1	NOT IN CONTROL IP
A	Isoform 1 of Splicing factor 3B subunit 3	1	0.11
A	Isoform 1 of U5 small nuclear ribonucleoprotein 200 kDa helicase	1	0.5

A	Isoform 1 of Uncharacterized protein C1orf103	1	0.33
A	Isoform 2 of Nucleolar protein 6	1	0.5
A	Isoform 3 of Apoptotic chromatin condensation inducer in the nucleus	1	1
A	Isoform 3 of Exportin-2	1	0.5
A	Isoform 3 of Heterogeneous nuclear ribonucleoprotein U-like protein 1	1	0.25
A	Keratin, type I cytoskeletal 24	1	NOT IN CONTROL IP
A	Matrin-3	1	0.11
A	Nucleolar protein 58	1	1
A	Nucleolar protein 9	1	0.5
A	Probable ATP-dependent RNA helicase DDX27	1	0.2
A	Putative uncharacterized protein FUS	1	NOT IN CONTROL IP
A	Putative uncharacterized protein PES1	1	NOT IN CONTROL IP
A	Putative uncharacterized protein S100A9	1	NOT IN CONTROL IP
A	Scaffold attachment factor B2	1	0.33
A	Seipin	1	0.25
A	testis-expressed sequence 10 protein isoform 2	1	0.25
A	U3 small nucleolar RNA-associated protein 14 homolog A isoform 2	1	0.13
<hr/>			
B	DNA topoisomerase 2	23	2.3
B	ATP-dependent RNA helicase A	19	3.2
B	HEAT repeat-containing protein 1	14	7
B	Isoform 1 of U5 small nuclear ribonucleoprotein 200 kDa helicase	14	14
B	Isoform 1 of Nucleolar RNA helicase 2	13	NOT IN CONTROL IP
B	Protein RRP5 homolog	13	6.5
B	Isoform Beta-1 of DNA topoisomerase 2-beta	11	1.8
B	Isoform 2 of Nuclear mitotic apparatus protein 1	9	NOT IN CONTROL IP
B	Matrin-3	9	NOT IN CONTROL IP
B	FACT complex subunit SPT16	7	1.4
B	Isoform 1 of Splicing factor 3B subunit 3	7	2.3
B	NOP2 protein	7	NOT IN CONTROL IP
B	RNA-binding protein 28 isoform 2	7	NOT IN CONTROL IP
B	116 kDa U5 small nuclear ribonucleoprotein component isoform b	6	NOT IN CONTROL IP
B	Isoform 1 of Myb-binding protein 1A	6	NOT IN CONTROL IP
B	SWI/SNF-related matrix-associated actin-dependent regulator of chromatin subfamily A member 1	6	1.5
B	Isoform 1 of Dedicator of cytokinesis protein 2	5	NOT IN CONTROL IP
B	Isoform Short of Antigen KI-67	5	NOT IN CONTROL IP



B	N-acetyltransferase 10 isoform b	5	NOT IN CONTROL IP
B	Pre-mRNA-processing-splicing factor 8	5	NOT IN CONTROL IP
B	Ribosome biogenesis protein BOP1	5	5
B	DNA topoisomerase 1	4	NOT IN CONTROL IP
B	Importin subunit beta-1	4	NOT IN CONTROL IP
B	PH-interacting protein	4	4
B	Splicing factor 3B subunit 1	4	2
B	U3 small nucleolar RNA-associated protein 14 homolog A isoform 2	4	NOT IN CONTROL IP
B	cDNA FLJ51295, highly similar to Cell division cycle 5-like protein	3	NOT IN CONTROL IP
B	cDNA FLJ56548, highly similar to Elongation factor 2	3	NOT IN CONTROL IP
B	Deoxynucleotidyltransferase terminal-interacting protein 2	3	NOT IN CONTROL IP
B	Fatty acid synthase	3	NOT IN CONTROL IP
B	Gem-associated protein 5	3	NOT IN CONTROL IP
B	Isoform 1 of Protein ELYS	3	1.5
B	Isoform 2 of Nucleolar protein 6	3	3
B	Isoform 2 of Structural maintenance of chromosomes flexible hinge domain-containing protein 1	3	3
B	Periodic tryptophan protein 2 homolog	3	NOT IN CONTROL IP
B	Probable ATP-dependent RNA helicase DDX27	3	NOT IN CONTROL IP
B	Putative uncharacterized protein PELP1	3	NOT IN CONTROL IP
B	Scaffold attachment factor B2	3	1
B	Seipin	3	NOT IN CONTROL IP
B	signal transducer and activator of transcription 3 isoform 3	3	NOT IN CONTROL IP
B	Structural maintenance of chromosomes protein 1A	3	0.75
B	Structural maintenance of chromosomes protein 3	3	0.75
B	WD repeat-containing protein 3	3	NOT IN CONTROL IP
B	176 kDa protein	2	2
B	94 kDa protein	2	1
B	DNA-directed RNA polymerase	2	1
B	DNA-directed RNA polymerase II subunit RPB1	2	NOT IN CONTROL IP
B	Isoform 1 of Heat shock protein HSP 90-alpha	2	NOT IN CONTROL IP
B	Isoform 2 of ATPase family AAA domain-containing protein 2B	2	1
B	Isoform 2 of Tyrosine-protein kinase BAZ1B	2	0.7
B	Isoform 4 of RNA-binding protein 25	2	NOT IN CONTROL IP
B	Isoform 5 of Double-stranded RNA-specific adenosine deaminase	2	NOT IN CONTROL IP
B	Isoform 5 of Sentrin-specific protease 7	2	NOT IN CONTROL IP
B	Keratin, type I cytoskeletal 24	2	2

B	NOP14 protein	2	NOT IN CONTROL IP
B	Putative rRNA methyltransferase 3	2	NOT IN CONTROL IP
B	Putative uncharacterized protein DKFZp781L0540 (Fragment)	2	1
B	RSL1D1 protein	2	2
B	SAFB-like transcription modulator isoform b	2	NOT IN CONTROL IP
B	similar to protein kinase, DNA-activated, catalytic polypeptide	2	NOT IN CONTROL IP
B	Splicing factor 3A subunit 1	2	NOT IN CONTROL IP
B	THO complex subunit 2	2	NOT IN CONTROL IP
C	Interleukin enhancer-binding factor 2	7	0.78
C	Tubulin beta-2C chain	7	1.75
C	Tubulin, beta	7	1.17
C	Eukaryotic initiation factor 4A-III	6	1.2
C	Vimentin	6	2
C	cDNA FLJ53063, highly similar to Tubulin beta-7 chain	5	1.25
C	cDNA FLJ54533, highly similar to Heterogeneous nuclear ribonucleoprotein H	5	0.63
C	U3 small nucleolar RNA-associated protein 15 homolog	5	2.5
C	cDNA FLJ53012, highly similar to Tubulin beta-7 chain	4	2
C	Eukaryotic initiation factor 4A-I	4	1.33
C	Heterogeneous nuclear ribonucleoprotein F	4	0.67
C	Heterogeneous nuclear ribonucleoprotein K	4	1
C	Isoform 2 of RuvB-like 1	4	4
C	Ribosome biogenesis regulatory protein homolog	4	0.8
C	ATP synthase subunit alpha, mitochondrial	3	0.75
C	cDNA FLJ32385 fis, clone SKMUS1000110, highly similar to Tubulin alpha-8 chain	3	1
C	h/ACA ribonucleoprotein complex subunit 4 isoform 2	3	1.5
C	Isoform 1 of Polypyrimidine tract-binding protein 1	3	0.6
C	Pre-mRNA-processing factor 19	3	1
C	Putative uncharacterized protein HNRNPD	3	1
C	RuvB-like 2	3	1.5
C	59 kDa protein	2	NOT IN CONTROL IP
C	DDB1- and CUL4-associated factor 13	2	1
C	Elongation factor 1-alpha 1	2	1
C	Erlin-1	2	NOT IN CONTROL IP
C	HLA-B associated transcript 1	2	NOT IN CONTROL IP
C	Nucleolar protein 56	2	1

C	probable ATP-dependent RNA helicase DDX47 isoform 2	2	0.4
C	Ribonuclease inhibitor	2	NOT IN CONTROL IP
C	Ribosome biogenesis protein WDR12	2	1
C	signal transducer and activator of transcription 3 isoform 3	2	NOT IN CONTROL IP
C	T-complex protein 1 subunit beta	2	NOT IN CONTROL IP
C	TDP43	2	1